

CHUNGBUK



*Great Challenge
For Our Future*



CHUNGBUK
NATIONAL UNIVERSITY

NATIONAL UNIVERSITY



What is G-Cruit?

CBNU G-Cruit is an online based platform designed to recruit high-performing graduate students. This unprecedented platform is established for connecting prospective applicants from all over the world with our dept.(faculty), lab on campus.

As a prospective Graduate applicant at CBNU, you will have the opportunity to advance your international career as part of a world-class academic & research team.



Student
Community



G-Cruit



CBNU



- 30 Professors in Humanities and Social Sciences, Arts
- 25 Professors in Natural Sciences
- 35 Professors in Engineering
- 10 Professors in Medicine



- 15 Majors in Humanities and Social Sciences, Arts
- 12 Majors in Natural Sciences
- 15 Majors in Engineering
- 3 Majors in Medicine



3+2 BA-MA Linked Program



What is 3+2 BA-MA Linked Program?

Graduate Early from Undergrad. (Bachelor's degree)
Advance to Grad. (Master's degree)

Earn credits by taking graduate classes while participating in the Exchange program at CBNU during their undergrad. studies.

Credits earned during this Exchange program will be Recognized as credits toward graduation from both schools.



BACHELOR'S



EXCHANGE PROGRAM



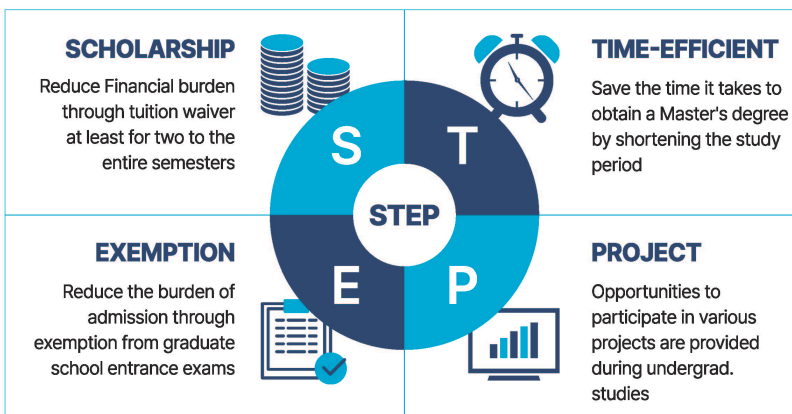
Graduate Early



MASTER'S

Great Challenge For Our Future!

4 Key Benefits; S.T.E.P



3+2 BA-MA Linked Program Available Depts. & Faculty (26majors)

No.	Department	Major	Field	Course Medium	Linguistic Requirements for Admission
1	English Language and Literature	English Linguistics	Humanities and Social Sciences	English	English Proficiency Exam TOEFL(PBT550, CBT 210, iBT 80), TEPS 550 points, IELTS 5.5, TOEIC 675 points (or more)
2	English Language and Literature	English Literature	Humanities and Social Sciences	English	English Proficiency Exam TOEFL(PBT550, CBT 210, iBT 80), TEPS 550 points, IELTS 5.5, TOEIC 675 points (or more)
3	English Language and Literature	Intermediate English Communication	Humanities and Social Sciences	English	English Proficiency Exam TOEFL(PBT550, CBT 210, iBT 80), TEPS 550 points, IELTS 5.5, TOEIC 675 points (or more)
4	Archaeology and Art History	Archaeology	Humanities and Social Sciences	Korean	TOPIK Lev.5 or above
5	Archaeology and Art History	Art History	Humanities and Social Sciences	Korean	TOPIK Lev.5 or above
6	Accounting	Accounting	Humanities and Social Sciences	Korean 50%, English 50%	IELTS 6.0, TOPIK 4
7	Government Finance Accounting	Government Finance Accounting	Humanities and Social Sciences	Korean 50%, English 50%	IELTS 6.0, TOPIK 3
8	Mathematics	Mathematics and logic	Natural Science	Korean / English	IELTS 6.0, TOPIK Lev.3
9	Physics	Physics	Natural Science	Undergrad: Korean 100% MS: English 100%	IELTS 6.0 (or any nationally recognized English Proficiency Exam's score equivalent to this) TOPIK Lev.3
10	Chemistry	Inorganic and Analytical Chemistry	Natural Science	Korean & English	IELTS 6.0, TOPIK Lev.3
11	Biological Sciences and Biotechnology	Biological Sciences	Natural Science	Korean & English	IELTS 6.0, TOPIK Lev.3
12	Astronomy and Space Science	Astronomy and Space Science	Natural Science	Korean & English	TOPIK Lev.3 or above
13	Astronomy and Space Science	Public Astronomical Science	Natural Science	Korean 100%	TOPIK Lev.3 or above
14	Earth and Environmental Sciences	Geological Science	Natural Science	Korean 100%	N/A
15	Civil Engineering	Structural Engineering	Engineering	English	TOEFL 80, IELTS 6.5 or TOEIC 700
16	[Environmental Engineering]	Environmental Engineering	Engineering	Korean 50%, English 50%	IELTS 5.5 or TOPIK Lev.4
17	[Urban Engineering]	Urban Engineering	Engineering	Korean	TOPIK Lev.4
18	[Chemical Engineering]	Chemical Engineering	Engineering	Korean 50%, English 50%	IELTS 6.5, TOPIK Lev.3
19	[Electrical Engineering]	Electrical Engineering	Engineering	Korean 50%, English 50%	IELTS 6.0, TOPIK Lev.3
20	[Radio & Communications Engineering]	Radio & Communications Engineering	Engineering	Korean 50%, English 50%	IELTS 6.0, TOPIK Lev.3
21	[Computer Science]	Computer Science	Engineering	English	TOEIC 700 points (or more), IELTS 6.0 or TOPIK Lev.3
22	Agronomy	Crops	Natural Science	Korean 50%, English 50%	TOPIK Lev.5
23	Agricultural Chemistry	Agricultural Chemistry	Natural Science	Korean 50%, English 50%	IELTS 6.0, TOPIK Lev.3
24	Industrial Plant Science and Technology	Industrial Plant Science and Technology	Natural Science	Korean	TOPIK
25	[Animal Science]	Animal Science	Natural Science	Korean 50%, English 50%	TOPIK Lev.5
26	[Food Science and Technology]	Food Engineering	Natural Science	Korean 75%	TOPIK Lev.5

COLLEGES

15

Colleges and Schools
(Departments)

9

Graduate Schools
1 General, 1 Specialized,
7 Special

17,304

Undergraduate Students(as of August 2023)

3,244

Graduate Students
Masters: 2,559, Doctorate: 772, Integrated: 174
(as of August 2023)

College of Electrical and Computer Engineering

School of Electrical Engineering / *School of Electronics Engineering
School of Information and Communication Engineering
Dept. of Computer Engineering / School of Computer Science
Dept. of Intelligent Systems and Robotics

* Planning on reforming it into Dept. of Electronic Engineering
and establishing the School of Semiconductor Engineering
in the 2024 academic year

College of Agriculture, Life & Environment Sciences

Major of Crop Science / Major of Environmental & Biological Chemistry
Major in Food Science and Biotechnology / Major in Animal Science
Major in Industrial Plant Science & Technology
Major of Horticultural Science / Major of Plant Medicine
Dept. of Forest Science / Dept. of Agricultural and Rural Engineering
Dept. of Biosystems Engineering / Dept. of Wood and Paper Science
Dept. of Agricultural Economics

College of Education

Dept. of Education / Dept. of Korean Education / Dept. of English Education
Dept. of History Education / Dept. of Geography Education
Dept. of Social Studies Education / Dept. of Ethics Education
Dept. of Physics Education / Dept. of Chemistry Education
Dept. of Biology Education / Dept. of Earth Science Education
Dept. of Mathematics Education / Dept. of Physical Education

College of Humanities

Dept. of Korean Language and Literature
Dept. of Chinese Language and Literature
Dept. of English Language and Literature
Dept. of German Language and Literature
Dept. of French Language and Literature
Dept. of Russian Language and Literature / Dept. of Philosophy
Dept. of History / Dept. of Archaeology and Art History

College of Social Sciences

Dept. of Sociology / Dept. of Psychology / Dept. of Public Administration
Dept. of Political Science and International Relations / Dept. of Economics

College of Natural Sciences

Dept. of Mathematics / Dept. of Information & Statistics
Dept. of Physics / Dept. of Chemistry / Major of Biology
Major in Microbiology / Major in Biochemistry
Dept. of Astronomy & Space Science
Dept. of Earth and Environmental Sciences

College of Business

School of Business / Dept. of International Business
Dept. of Management Information Systems

College of Engineering

School of Civil Engineering / School of Mechanical Engineering
Dept. of Chemical Engineering / Dept. of Advanced Materials Engineering
Dept. of Architectural Engineering / Dept. of Safety Engineering
Dept. of Environmental Engineering / Dept. of Engineering Chemistry
Dept. of Urban Engineering / Dept. of Architecture
*Dept. of Techno Industry Engineering
*Special contract department for workers

College of Human Ecology

Dept. of Food and Nutrition / Dept. of Child Welfare
Dept. of Clothing & Textiles (Dept. of Fashion Design Information)
Dept. of Housing & Interior Design / Dept. of Consumer Science

College of Veterinary Medicine

Dept. of Veterinary Medicine / Pre-veterinary

College of Pharmacy

Dept. of Pharmacy / Dept. of Manufacturing Pharmacy

College of Medicine

Dept. of Medicine/Premedical / Dept. of Nursing Science

College of Bio-Health University System

Dept. of Pharmaceutical Biology
Dept. of Industrial Cosmetic Science
Dept. of Natural Materials
Dept. of Synchrotron Radiation Science and Technology

The Liberal Studies Major

Convergence Department
Dept. of Fine Arts / Dept. of Design

SPECIALIZED GRADUATE SCHOOL

- Law School

SPECIAL GRADUATE SCHOOL

- Graduate School of Education
- Graduate School of Industries
- Graduate School of Business
- Graduate School of Legal Affairs
- Sejong Graduate School of National Policy
- Graduate School of Veterinary Biosecurity and Protection
- Graduate School of Northern Agriculture

Global Business	Global Business
Korean Language and Literature	Korean Linguistics Modern Literature Classical Literature
Chinese Language and Literature	Chinese Linguistics Chinese Literature Chinese-Korean Interpretation and Translation Studies
English Language and Literature	English Linguistics English Literature Intermediate English Communication
German Language and Literature	German Linguistics German Literature Global Communication
French Language and Literature	French Linguistics French Literature Global Communication
Russian Language and Literature	Russian Linguistics Russian Literature Russian Area Studies Russian Translation Literature
Philosophy	Western Philosophy Eastern Philosophy
History	Korean History Asian History Western History
Archaeology and Art History	Archaeology Art History
Sociology	Sociology
Psychology	Psychology
Public Administration	Public Administration
Political Science and International Relations	Political Science and International Relations
Economics	Economics Financial Management
Business Administration	Operations Management Marketing Organization and Human Resource Management
International Business	International Business
Accounting	Accounting
Management Information Systems	Management Information
Agricultural Economics	Agricultural Economics Farm Management

GRADUATE SCHOOL

The graduate school has a substantial curriculum based on in-depth research programs of basic, applied, and interdisciplinary studies. As of the 2023 academic year, the master's program is run by 65 departments and 3 divisions with a total of 672 students. The doctoral program is run by 58 departments and 3 divisions with a total of 312 students. 18 institutions are participating in the university-industry-research cooperation programs and there exist 17 interdisciplinary program.

- Humanities and Social Sciences
- Natural Sciences
- Engineering
- Arts and Physical Education
- Medicine
- Interdisciplinary Program
- Special contract department for workers



Master's Program	65 departments	3 divisions	University-Industry-Research Cooperation Program	18 institutions
Doctoral Program	58 departments	3 divisions	Interdisciplinary Programs	17 programs

Education	Educational Psychology and Counseling
	History of Education, Philosophy of Education
History Education Major	Educational Administration
	Educational Sociology
Social Studies Education	Curriculum, Educational Evaluation and Educational Technology
	IR
Ethics Education	History Education Major
	Geography Education Major
Child Welfare	Social Studies Education
	Ethics Education
Consumer Science	Child Welfare
	Consumer Science
Law (Graduate school M.S.)	Public Law
	Social Law
Law (Law school Ph.D)	Science and Technology Law
	Civil Law
Mathematics	Commercial Law
	Criminal Law-Principles of Jurisprudence
Statistics	Public Law
	Social Law
Physics	Science and Technology Law
	Civil Law
Chemistry	Commercial Law
	Criminal Law and Principles of Jurisprudence
Biological Sciences and Biotechnology	Mathematics and logic
	Information Statistics
Astronomy and Space Science	Physics
	Scientific Instrumentation and Development
Earth and Environmental Sciences	Physical chemistry
	Organic and Biochemistry
Agronomy	Inorganic and Analytical Chemistry
	Biological Sciences
Agricultural Chemistry	Biotechnology
	Ecology, Evolution and Environmental System Sciences
Industrial Plant Science and Technology	Biochemistry and Molecular Biology
	Astronomy and Space Science
Forest Science	Public Astronomical Science
	Geological Science
Agricultural and Rural Engineering	Crops
	Agricultural Chemistry
Biosystems Engineering	Industrial Plant Science and Technology
	Forest Resources
Forest Products	Forest Management
	Rural Development Engineering
Division of Animal, Horticultural and Food Sciences	Environmental and Agricultural Water Engineering
	Biosystems Engineering
[Animal Science]	Pulp Paper Technology
	Wood Engineering and Conservation Science
[Horticulture]	Animal Science
	Horticulture
[Food Science and Technology]	Food Engineering
	Plant Pathology
Agricultural Biology	Applied Entomology

Science Education	Physics Education
	Chemistry Education
	Biology Education
	Earth Science Education
Mathematics Education	Mathematics Education
Food and Nutrition	Food and Nutrition
Clothing & Textiles	Clothing & Textiles
	Global Fashion Business [Intensive course]
Housing & Interior Design	Housing & Interior Design
Pharmacy*	Drug Material
	Drug Function
Applied Pharmacy*	Industrial Pharmacy
	Clinical Pharmacy
	Bio-Artificial Intelligence
	Industrial Cosmetic Science
Nursing	Nursing
Biomedical Convergence	Health Policy & Disease management
	Biomedical R&D Management
	Biomedical Research Management
	Biomedical Artificial Intelligence
Civil Engineering	Structural Engineering
	Hydraulic and Water Resources Engineering
	Geotechnical Engineering
	Surveying & Geo-Spatial Information Engineering
	Construction Management & Systems Engineering
Architectural Engineering	Architectural Engineering
Mechanical Engineering	Mechanical Engineering
Safety Engineering	Safety Engineering
Engineering Chemistry	Engineering Chemistry
Mechanical and Precision Engineering	Precision Mechanical Engineering
Architecture	Architecture
School of Urban, Energy and Environmental Engineering	
[Environmental Engineering]	Environmental Engineering
[Urban Engineering]	Urban Engineering
[Chemical Engineering]	Chemical Engineering
[Material Engineering]	Material Engineering
School of Electrical Engineering and Computer Science	
[Electrical Engineering]	Electrical Engineering
[Electronics Engineering]	Electronics Engineering
[Information and Communication Engineering]	Information and Communication Engineering
[Radio & Communications Engineering]	Radio & Communications Engineering
[Intelligent Systems and Robotics]	Intelligent Systems and Robotics
[Semiconductor Engineering]	Semiconductor Engineering
[Computer Science]	Computer Science
[Computer Engineering]	Computer Engineering
Physical Education	Physical Education
Fine Art	Oriental Painting
	Western Painting
	Sculpture
	Art Theory
Design	Design
Veterinary Medicine	Morphological Veterinary Medicine
	Functional Veterinary Medicine
	Preventive Veterinary Medicine
	Clinical Veterinary Medicine
	Bioproduct Evaluation

Medicine	Anatomy
	Surgery
	Obstetrics & Gynecology
	Internal Medicine
	Urology
	Thoracic Surgery
	Parasitology
	Ophthalmology
	Otolaryngology
	Dermatology
	Neurosurgery
	Plastic Surgery
	Neurology
	Anesthesiology & Pain Medicine
	Laboratory Medicine
	Health Informatics and Management
	Radiation Oncology
	Orthopedic Surgery
	Pathology
	Preventive Medicine
	Biomedical Engineering
	Physiology
	Rehabilitation Medicine
	Dentistry
	Microbiology
	Biochemistry
Pharmacology	
Emergency Medicine	
Program in Integrated Medical Science	
Program in Neuroscience	
Pediatrics	
Radiology	
Neuropsychiatry	
Precision Medical Science	
Family Medicine	
Clinical Pharmacology	
Crisisomony	Crisisomony
Global Studies on Management and Information Science	Global Studies on Management and Information Science
Government Finance Accounting	Government Finance Accounting
Bio-Convergence Future Technology	Technology Management
Intellectual Property Smart Convergence	Intellectual Property
Interdepartment Program of Biotechnology Industry	Bioactive Drugs Major
	Functional Foods
Cultural Heritage Science Forest Therapy	Bioactive Materials Major
	Cultural Heritage Science
International Agricultural Development	Forest Therapy
	Agricultural Environment
	Animal Science
	Agricultural Infra and Machinery
Big Data	Agricultural Economics
	Big Data
	Safety CPS
Convergence Security	Convergence Security
Green Energy Engineering	Greenenergy Engineering
Disaster Prevention Engineering	Earthquake Disaster Prevention Engineering
	Disaster Management
Eco-Industrial Convergence	Eco-Industrial Convergence
Urban Regeneration	Urban Regeneration
Smart Car	Smart Car Engineering
Interdisciplinary Program of Biomedical Engineering	Biomedical Engineering



CBNU
Mobile Brochure

CBNU ISSC
HOMEPAGE



CBNU OIA
HOMEPAGE



CBNU OIA
YOUTUBE



CBNU OIA
INSTAGRAM

